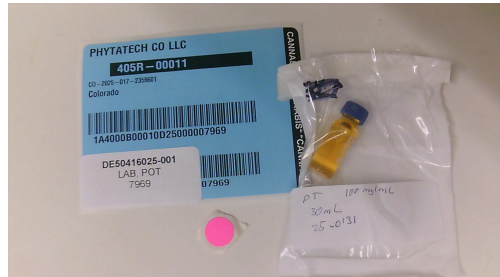




Certificate of Analysis

Pages 1 of 2

PASSED



Harvest/Lot ID: 25-0131
Batch #: BR-158-T30-3000-250320-01
Harvest Date: 03/30/25
Seed to Sale #:
1A4000B00010D25000007969
Production Method: Coconut Oil
Total Amount: 16029 gram
Retail Product Size: 29.25 gram
Retail Serving Size: 0.975
Servings: 1
Metric Package #:
1A4000B00010D25000007969
Metric Source Package #: NA

Lab ID: DE50416025-001
Sampled Date: 04/16/25
Sampling Method: N/A
Completed: 04/17/25
Laboratory License #: 405R-00011
Sample Size: 2 gram
Ordered: 04/14/25

Peak Therapeutics GlacierPak LLC

1070 Diamond Valley Drive
Windsor, CO, 80550, US
License #: 405R-00011

SAFETY RESULTS

MISC.

									
Pesticide	Heavy Metals	Microbial	Mycotoxins	Solvents	Filtration	Water Activity	Moisture Content	Vitamin E	Terpenes
NOT TESTED	NOT TESTED	NOT TESTED	NOT TESTED	NOT TESTED	NOT TESTED	NOT TESTED	NOT TESTED	NOT TESTED	NOT TESTED



Cannabinoid

PASSED



Total THC
0.2930%
Total THC/Container : 85.702 mg



Total CBD
10.4278%
Total CBD/Container : 3050.131 mg



Total Cannabinoids
12.0490%
Total Cannabinoids/Container : 3524.332 mg

	CBDV	CBDVA	CBG	CBD	CBDA	THCV	CBGA	CBN	EXO-THC	D9-THC	D8-THC	THCVA	D10-THC	CBC	THCA
%	ND	ND	0.2140	10.3270	0.1150	ND	0.0530	ND	ND	0.2930	ND	ND	ND	1.0470	ND
mg/g	ND	ND	2.140	103.270	1.150	ND	0.530	ND	ND	2.930	ND	ND	ND	10.470	ND
LOQ	0.0015	0.0010	0.0020	0.0014	0.0014	0.0020	0.0010	0.0010	0.0040	0.0010	0.0020	0.0010	0.0021	0.0020	0.0020
%	%	%	%	%	%	%	%	%	%	%	%	%	%	%	%

Qualifier

Analyzed by:
3200, 3498, 8, 3665

Weight:
0.2495g

Extraction date:
04/16/25 15:51:03

Extracted by:
3200

Analysis Method : SOP.T.40.039.CO

Analytical Batch : DE009888POT

Instrument Used : Shimadzu LC-2030C 3D Plus Ted

Analyzed Date : 04/17/25 11:21:30

Batch Date : 04/16/25 09:16:24

Dilution : 40

Reagent : 031325.01; 031325.04; 031325.11; 032225.R01; 041525.R05; 040325.R06; 041125.R05; 091024.R07; 041525.R09; 032825.R08

Consumables : 230822-052-1A; 947.100; 04303051; 357324-5; 0000186393; 241023-3059-A; 1008897304; 61572-107C6-107H

Pipette : P1000- 218648; POT- 20E73244; POT- 20E74976; POT- 20K63477; P200- 6507768

Full spectrum cannabinoid analysis utilizing High Performance Liquid Chromatography with DAD detection (HPLC-UV). Method SOP.T.90.010.CO for reporting. Lower limit of linearity for all cannabinoids is 1 mg/L.

This report shall not be reproduced, unless in its entirety, without written approval from Kaycha Labs. This report is a Kaycha Labs certification. The results relate only to the material received or product analyzed. Test results are confidential unless explicitly waived otherwise. Void after 1 year from test end date. Cannabinoid or contaminant content of batch material may vary depending on sampling error. ND=Not Detected, NT=Not Tested, ppm=Parts Per Million, ppb=Parts Per Billion. Limit of Detection (LoD) and Limit of Quantitation (LoQ) are terms used to describe the smallest concentration that can be reliably measured by an analytical procedure. RPD=Reproducibility of two measurements. Action Levels are State determined thresholds. The Measurement Uncertainty (UM) error is available from the lab upon request.

William Stephens
Lab Director

William Stephens

State License #
405R-00011 405-00008
ISO 17025
Accreditation #
4331.01

Signature
04/17/25



879 Federal Blvd
Denver, CO, 80204, US
(303) 427-2379

Kaycha Labs
Natural 100 mg/mL CBD (30mL)
Matrix: Infused
Classification: CBD
Type: Tincture



Certificate of Analysis

Pages 2 of 2

Sample: DE50416025-001
GlacierPak LLC
Telephone: 9704304241
Email: joel@glacierpak.com

Seed to sale: 1A4000B00010D25000007969
Harvest/Lot ID: 25-0131
Batch #: BR-158-T30-3000-250320-01

Ordered: 04/14/25
Sampled: 04/16/25
Completed: 04/17/25

PASSED



Label Claim Verification

TESTED

ANALYTES	UNIT	LOD	LOQ	ACTION LEVEL	PASS/FAIL	RESULT	QUALIFIER
TOTAL CBG	mg	0.001	0.003		TESTED	76.191	
TOTAL CBN	mg	0.001	0.003		TESTED	ND	
Analyzed by:	Weight:	Extraction date:			Extracted by:		

This report shall not be reproduced, unless in its entirety, without written approval from Kaycha Labs. This report is a Kaycha Labs certification. The results relate only to the material received or product analyzed. Test results are confidential unless explicitly waived otherwise. Void after 1 year from test end date. Cannabinoid or contaminant content of batch material may vary depending on sampling error. ND=Not Detected, NT=Not Tested, ppm=Parts Per Million, ppb=Parts Per Billion. Limit of Detection (LoD) and Limit Of Quantitation (LoQ) are terms used to describe the smallest concentration that can be reliably measured by an analytical procedure. RPD=Reproducibility of two measurements. Action Levels are State determined thresholds. The Measurement Uncertainty (UM) error is available from the lab upon request.

William Stephens
Lab Director

State License #
405R-00011 405-00008
ISO 17025
Accreditation #
4331.01

Signature
04/17/25